


With **Us**, You can

**HIGH  
GREEN  
SAFE**



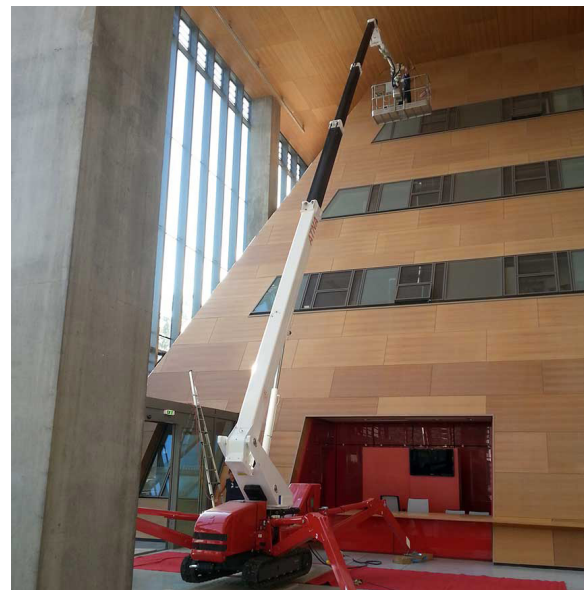
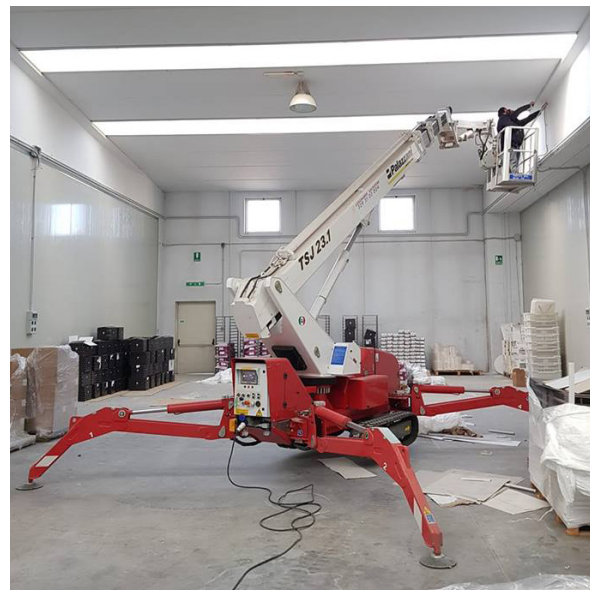
 22,3 m

 10,2 m

 250 kg

 Bi-energy  
Eco

 Crawlers



## STANDARD EQUIPMENT

- Hydraulic steering and transmission with 4 speeds
- Rubber tracks with hydraulically variable external width
- Independent outriggers rotating on 2 different positions
- Automatic set-up with self-levelling
- Turntable rotation at 660°
- CANBUS electronics
- Steel made telescopic boom
- Hydraulic and electric lines inside the boom
- Air \ water supplementary line along the boom with internal hose
- Removable aluminium alloy aerial cage 150x70x110 cm
- Cage with hydraulic rotation 90° + 80°
- “Area manager” limiting device for safe working load 250 kg
- Load sensor on the cage
- Cable control for cage/ground
- 230VAC electric plug on the cage
- PalSystem with touchscreen monitor for diagnostics and monitoring of operating parameters
- CE Mark homologation certificates, manuals, stickers and spares book in English language



**HYDRAULIC WINCH 500 KG**  
WITH 25 m ROPE AND SUPPORT



**INSTALLATION KIT FOR HYDRAULIC WINCH 500 KG**  
“RETURN TO HOME” FUNCTION INCLUDED



**QUICK PIPES COUPLING KIT FOR HYDRAULIC WINCH 500 KG**



**COMPACT BASKET SUPPORT**  
4 CASTORS UNDER THE CAGE INCLUDED



**TREE CUTTERS COVER PACKAGE**



**BASKET ANTI-COLLISION KIT WITH ULTRASONIC SENSORS AND LASERS**



**NON-MARKING TRACKS**



**CONTROL FOOT PEDAL ON THE CAGE**



**4 CASTORS UNDER THE CAGE**



**CAGE FOR ONE MAN 70x70x110 CM**



**PADS FOR OUTRIGGERS**



**CUSTOMIZED COLOURS**



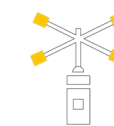
**LED LIGHT**



**RADIO CONTROL**



**INTER-PHONIC COMMUNICATION SYSTEM**



**ELECTRONIC ANEMOMETER**



**LIFTING HOOK IN PLACE OF THE BASKET**



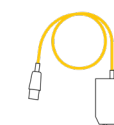
**DISPLAY IN THE BASKET**



**DRINK HOLDER IN THE BASKET**



**HANDS HEATER IN THE BASKET**



**DIAGNOSTIC CABLE KIT**



**EMERGENCY ELECTROPUMP KIT**