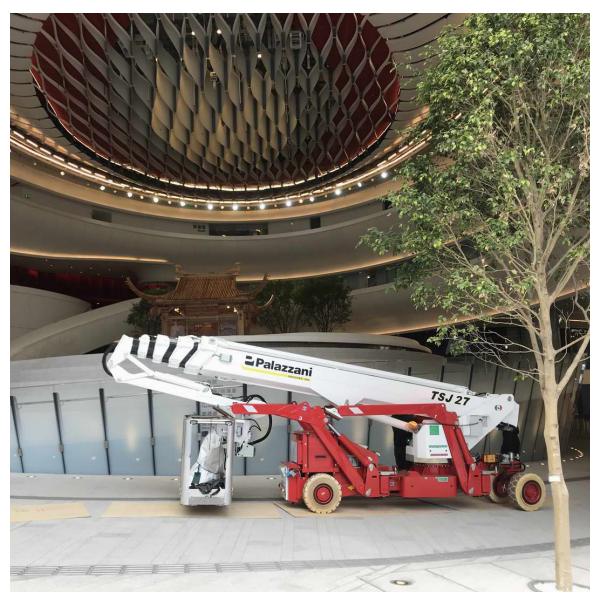


With **Us**, You can



**HIGH
GREEN
SAFE**



27 m



12,8 m



330 kg*
*optional



Bi-energy
Eco
Hybrid



Crawlers
Wheels



SPIDER LIFT

AVAILABLE OPTIONS

STANDARD EQUIPMENT

- Hydraulic steering and transmission with 4 speeds
- Rubber tracks with hydraulically variable external width
- Independent outriggers rotating on 2 different positions
- Automatic set-up with self-levelling
- Turntable rotation at 660°
- CANBUS electronics
- Steel made telescopic boom + fixed jib
- Hydraulic and electric lines inside the boom
- Air \ water supplementary line along the boom with internal hose
- Removable aluminium alloy aerial cage 180x70x110 cm
- Cage with hydraulic rotation 90° + 80°
- "Area manager" limiting device for safe working load 120 and 230 kg
- Load sensor on the cage
- Cable control at the ground + electric control at the cage
- 230VAC electric plug on the cage
- PalSystem with touchscreen monitor for diagnostics and monitoring of operating parameters
- CE Mark homologation certificates, manuals, stickers and spares book in English language



3rd WORKING AREA WITH 3 MEN



HYDRAULIC WINCH 500 KG
WITH 30 m ROPE AND SUPPORT



INSTALLATION KIT FOR
HYDRAULIC WINCH 500 KG
"RETURN TO HOME" FUNCTION INCLUDED



QUICK PIPES COUPLING KIT FOR
HYDRAULIC WINCH 500 KG



COMPACT BASKET SUPPORT
4 CASTORS UNDER THE CAGE INCLUDED



TREE CUTTERS COVER PACKAGE



BASKET ANTI-COLLISION KIT WITH
ULTRASONIC SENSORS AND LASERS



NON-MARKING TRACKS



CONTROL FOOT PEDAL ON THE
CAGE



4 CASTORS UNDER THE CAGE



CAGE FOR ONE MAN 70x70x110 CM



PADS FOR OUTRIGGERS



"RETURN TO HOME" FUNCTION



LIFTING ACCESSORIES KIT FOR
THE BASKET - LIFTING JIB, FRONT
SUPPORTS, UPPER SUPPORTS,
ELECTRONIC ANEMOMETER



CUSTOMIZED COLOURS



LED LIGHT



RADIO CONTROL



INTER-PHONIC
COMMUNICATION SYSTEM



ELECTRONIC ANEMOMETER



LIFTING HOOK IN PLACE OF
THE BASKET



DISPLAY IN THE BASKET



DRINK HOLDER IN THE BASKET



HANDS HEATER IN THE BASKET



DIAGNOSTIC CABLE KIT



EMERGENCY ELECTROPUMP KIT



PADS HOLDER



3 kW - 230 VAC ELECTRIC
GENERATOR



24+6 MONTHS OF WARRANTY
ON THE BATTERY

