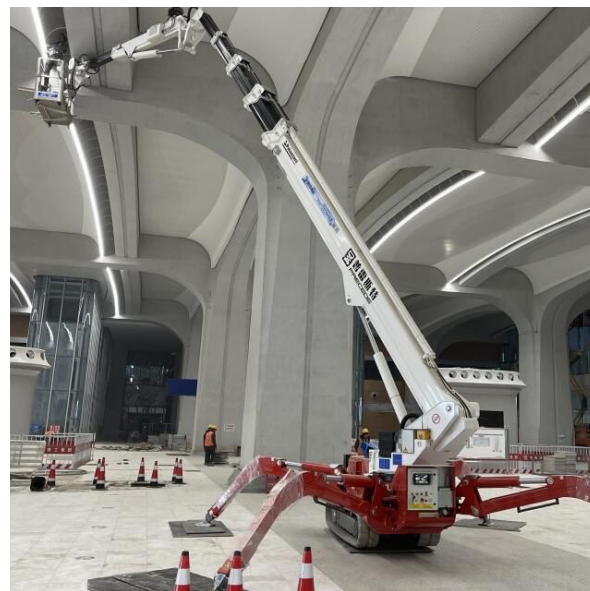



With **Us**, You can



**HIGH
GREEN
SAFE**

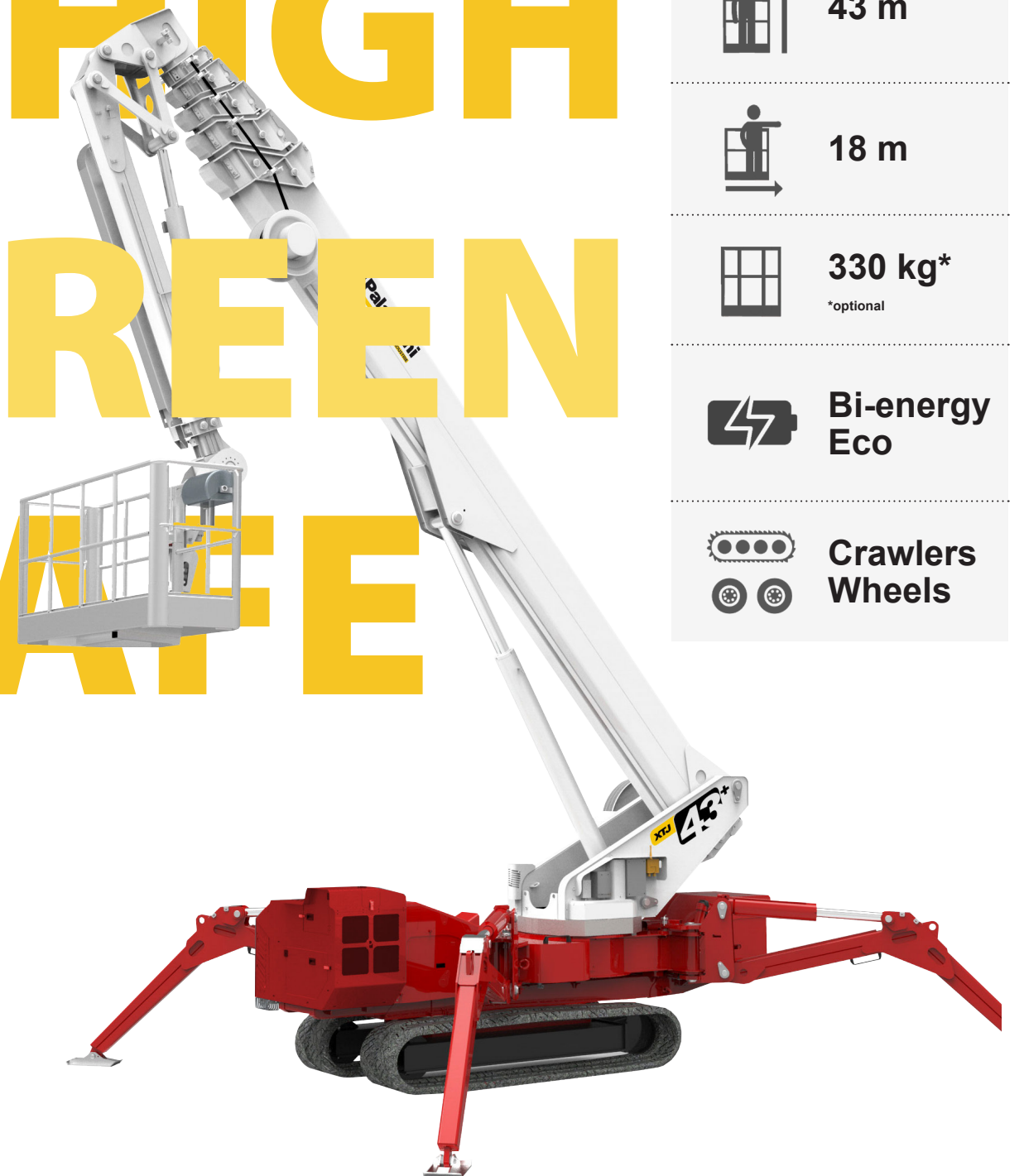
 **43 m**

 **18 m**

 **330 kg***
*optional

 **Bi-energy
Eco**

 **Crawlers**
 **Wheels**



STANDARD EQUIPMENT

- Emergency electropump
- Pistons hydraulic pump at variable displacement for fast and sharp movements and consumption savings
- CANBUS distributor + CANBUS electronics
- "Retrun to home" function
- Hydraulic steering and transmission with 4 speeds
- Rubber tracks with hydraulically variable external width
- Independent outriggers rotating on 2 different positions
- Automatic set-up with self-levelling
- Turntable rotation at 660°
- Steel made telescopic boom + telescopic jib
- Removable aluminium alloy aerial cage 240x70x110cm
- Cage with hydraulic rotation 90° + 80°
- "Area manager" limiting device for safe working load 120 and 230 kg
- Radio control at the ground + electric control at the cage
- 230VAC electric plug on the cage
- Air \ water supplementary line
- Inter-phonic communication system
- PalSystem with touchscreen monitor for diagnostics and monitoring of operating parameters
- CE Mark homologation certificates, manuals, stickers and spares book in English language



BI-ENERGY
(Diesel + AC)

ECO
(AC + Battery)



3rd WORKING AREA 330 KG
WITH 3 MEN IN THE BASKET



HYDRAULIC WINCH 500 KG
WITH 46 m ROPE AND SUPPORT



INSTALLATION KIT FOR HYDRAULIC WINCH 500 KG
"RETURN TO HOME" FUNCTION INCLUDED



QUICK PIPES COUPLING KIT FOR HYDRAULIC WINCH 500 KG



COMPACT BASKET SUPPORT
4 CASTORS UNDER THE CAGE INCLUDED



TREE CUTTERS COVER PACKAGE



BASKET ANTI-COLLISION KIT WITH ULTRASONIC SENSORS AND LASERS



NON-MARKING TRACKS



CONTROL FOOT PEDAL ON THE CAGE



4 CASTORS UNDER THE CAGE



CAGES OF DIFFERENT SIZES



PADS FOR OUTRIGGERS



PADS HOLDER



CUSTOMIZED COLOURS



LED LIGHT



ELECTRONIC ANEMOMETER



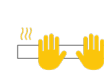
LIFTING HOOK IN PLACE OF THE BASKET



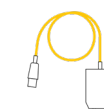
DISPLAY IN THE BASKET



DRINK HOLDER IN THE BASKET



HANDS HEATER IN THE BASKET



DIAGNOSTIC CABLE KIT



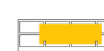
3 kW - 230 VAC ELECTRIC GENERATOR



24+6 MONTHS OF WARRANTY ON THE BATTERY



CHARGER WITH ADAPTORS
3,7 kW / 7,4 kW / 11 kW / 22 kW +
ADAPTORS FOR PLUGS IT/FR/CH/UK



LIFTING ACCESSORIES KIT FOR THE BASKET - LIFTING JIB, FRONT SUPPORTS, UPPER SUPPORTS, ELECTRONIC ANEMOMETER

