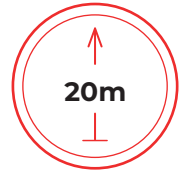


## PT 200E

### ON LIGHT VEHICLE

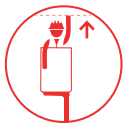


Working height

The PT 200E is a telescopic boom lift designed to reach a working height of 20 metres, while ensuring optimal accessibility to the most challenging areas thanks to its double telescope. Its HE-H multimode stabilisation system allows the front stabilisers to be adjusted to either side, providing a choice between compactness and performance to adapt to terrain constraints. This flexibility ensures optimal working conditions for operators, even in the presence of obstacles.

With a reach of up to 13 metres, it meets a variety of operational needs, including rental, public lighting maintenance, Christmas light installations, and tree pruning. Its  $+90^{\circ}/-90^{\circ}$  rotating basket, capable of supporting up to 300 kg, makes it easy to transport equipment and tools, making the PT 200E a powerful and versatile solution for all height-related tasks.

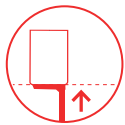
#### SPECIFICATIONS



20m



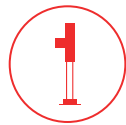
13m



18m



300kg



4 outriggers  
HE-H



125 x 75  
x 110 cm



$\leq 3.5T$



$+90^{\circ}/-90^{\circ}$



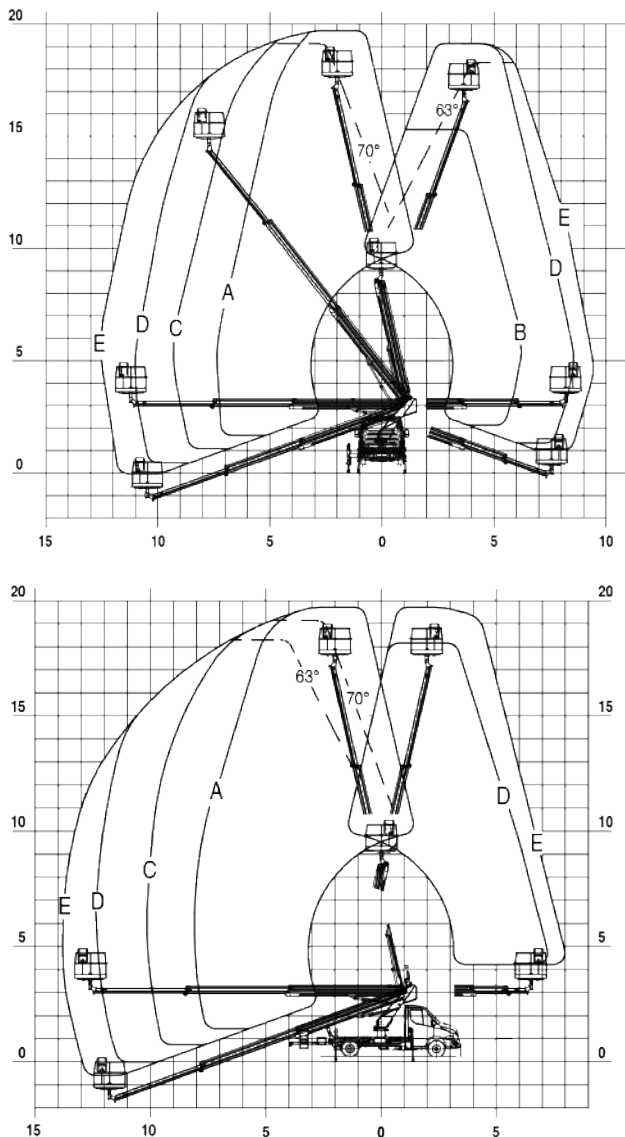
# ARTICULATED PLATFORM

## ON CHASSIS

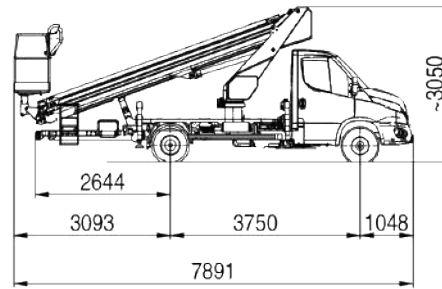
### POSSIBLE TYPES OF VEHICLES

*For vehicle options, please contact us before ordering.*

### WORKING DIAGRAM



### VEHICLE DRAWING



### STANDARD SPECIFICATIONS

- Nacelle engine stop/start
- 2 stabilisation modes
- Power-assisted turret and basket centring
- Emergency circuit on manual pump
- Proportional controls on all movements
- Secure access to work platform
- Conveyor chain for hoses inside the mast for optimum protection
- Rigid PVC protection for overhead controls
- 220V circuit in nacelle

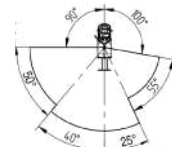
### OPTIONS

- Signage (tri-flash, 2 flashing lights, stripes)
- 1-person low-voltage insulated basket or tubular aluminium, fully opening, with safety-closure gate
- Lockers
- Aluminium side panels
- Tool holder in basket
- Extended warranty
- Maintenance pack

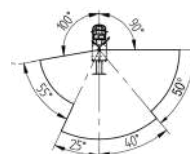
### FOUR STABILISATION MODES



Stabilisers extended on both sides



Stabilisers retracted on both sides



Stabilisers extended on the left side



Stabilisers extended on the right side